



**SternaLock<sup>®</sup> Blu**  
PRIMARY CLOSURE SYSTEM

---

## One Surgeon. One Patient®.

Over 1 million times per year, Biomet helps one surgeon provide personalized care to one patient.

The science and art of medical care is to provide the right solution for each individual patient. This requires clinical mastery, a human connection between the surgeon and the patient, and the right tools for each situation.

At Biomet, we strive to view our work through the eyes of one surgeon and one patient. We treat every solution we provide as if it's meant for a family member.

Our approach to innovation creates real solutions that assist each surgeon in the delivery of durable personalized care to each patient, whether that solution requires a minimally invasive surgical technique, advanced biomaterials, or a custom, patient-matched implant.

When one surgeon connects with one patient to provide personalized care, the promise of medicine is fulfilled.

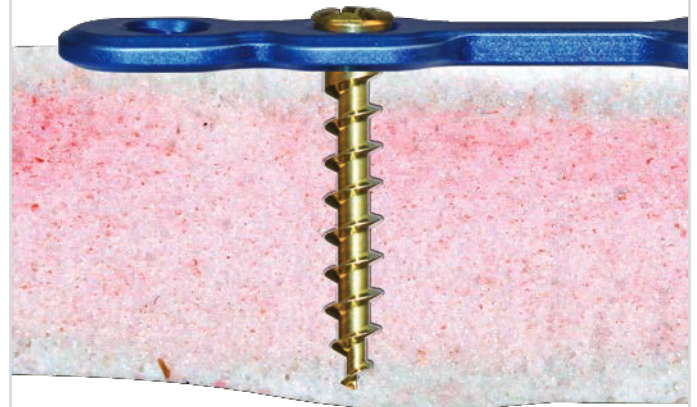
---

## DOUBLE-SIDED PLATE DESIGNS



Plate designs are available to facilitate the fixation of midline sternotomies, mini-sternotomies and mini-thoracotomies. The plates are double-sided and can be contoured to fit the patient's anatomy.

## PLATE AND SCREW THREAD LOCKING



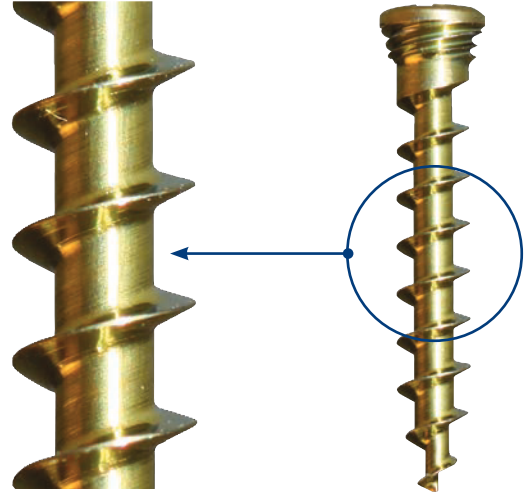
The screw tip engages into the posterior cortex of the sternum, and then locks into the plate at a 90 degree angle, rigidly fixating the bone halves together.

## LOW PROFILE PLATES



The 1.6mm thin titanium plates provide reduced palpability as compared to other sternal closure systems with higher profile plates.

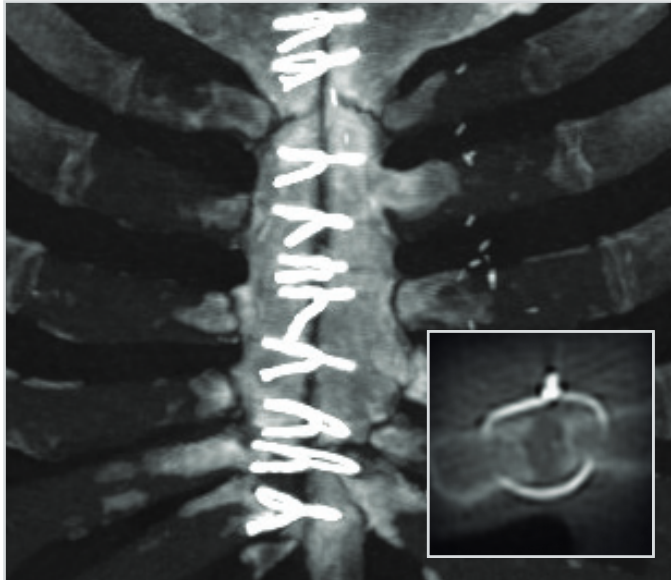
## CANCELLOUS SCREW DESIGN



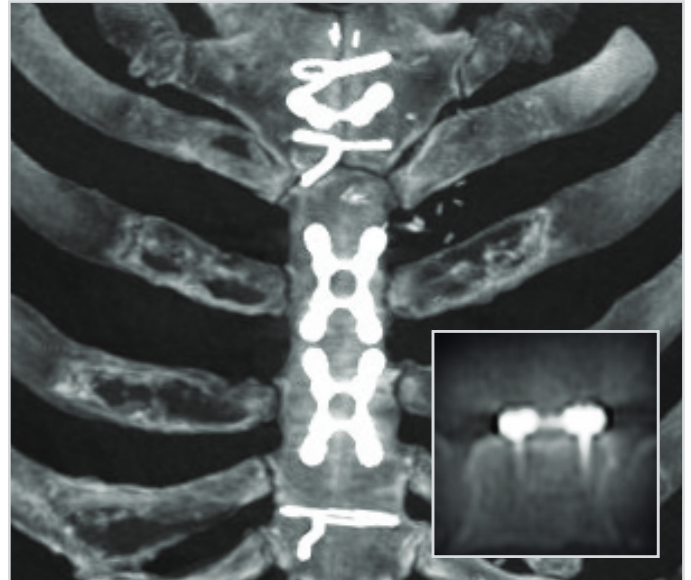
The deep screw threads are specifically designed to grip into the cancellous bone of the sternum and provide stable fixation.



## Mechanical Stability Supports Bone Healing<sup>1</sup>



CT scan shows separation of the sternal body with wires.

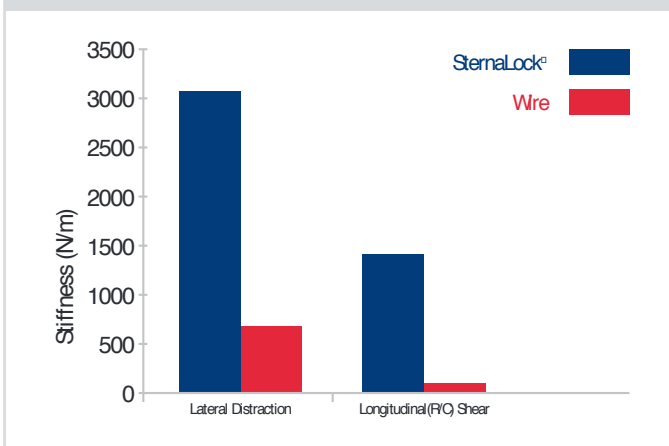


CT scan shows well-apposed sternum with plates and screws.

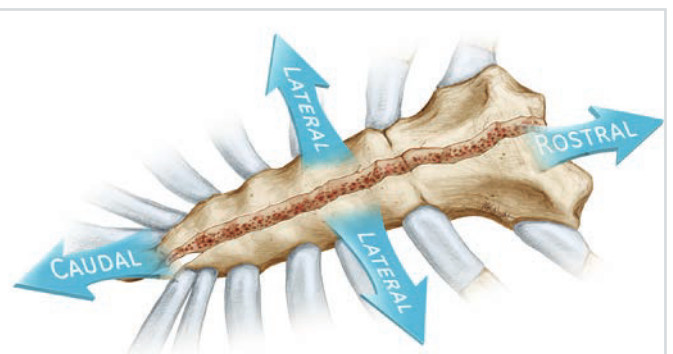
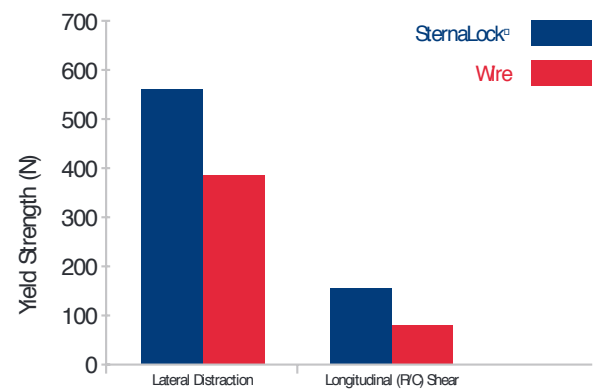
## Rigid Plate Fixation Results in Greater Stiffness and Strength Compared to Wire Cerclage<sup>2</sup>

In a cadaveric study, rigid fixation with plates was shown to exhibit superior mechanical properties compared to wire cerclage. When tested in lateral distraction, the stiffness of the plates was more than 400% greater than peristernal wires ( $p < 0.05$ ). Similarly, the yield load (560N vs. 397N) was also significantly better in sternum that were rigidly fixated.

### Comparison of Wire and Plate Stiffness



### Comparison of Wire and Plate Yield Load



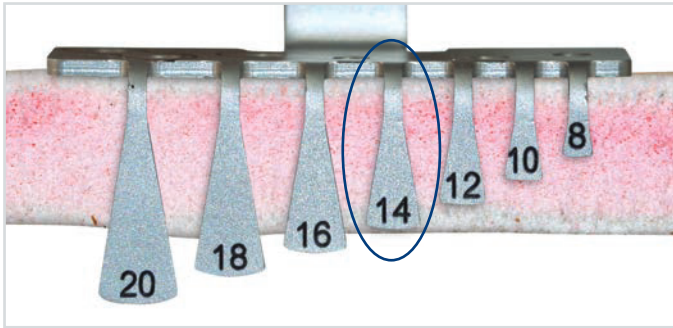
Sternal testing in Lateral Distraction and Longitudinal (R/C) Shear

1. [www.clinicaltrials.gov](http://www.clinicaltrials.gov) • NCT00819286

2. A cadaveric biomechanical analysis of sternal fixation systems, B.Hatcher, Ph.D.

\* Non-clinical studies are not necessarily indicative of human clinical results.

## Surgical Technique<sup>3</sup>



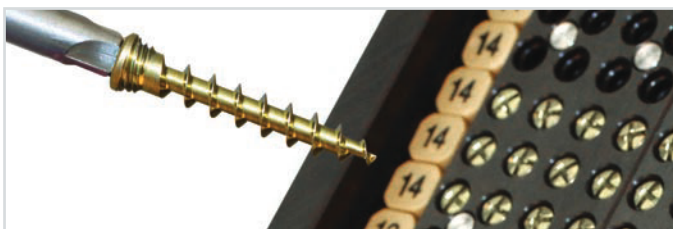
**1.** Measure sternal depth where plate placement will occur. Measure at 3 points (manubrium, body & xiphoid). In the photo above, the measuring device indicates that a 14mm screw length would be recommended for plate placement in the circled region. The measuring device accounts for the thickness of the plate, so a 14mm screw would be used in this example.

\*Note, if using a standard ruler to measure the thickness of the sternum, you should use the next highest even numbered length screw to account for the plate thickness. For example a sternal thickness of 8mm -9mm should utilize a 10mm screw, while a sternal thickness of 10mm-11mm should use a 12mm screw. Surgeons should always determine screw size based on the patient's anatomy.

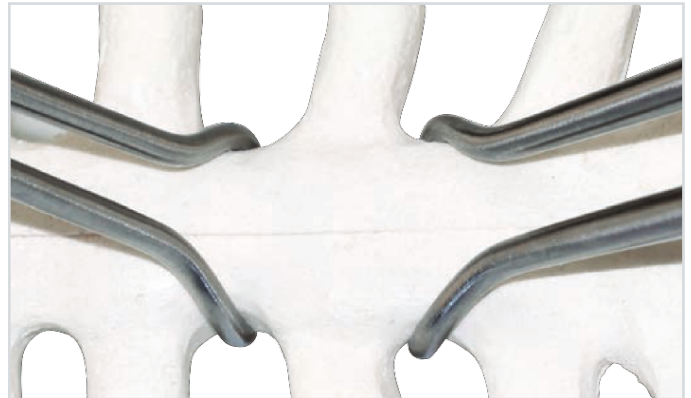
### Suggested Configuration



**3.** Select plate configuration. Place the lower X-plate as inferiorly as possible on the sternum. (see illustration for suggested configuration).



**5.** Select screws based on sternal depth measurements from step 1.



**2.** Wire the manubrium and xiphoid to reduce the top and bottom of the sternum. Complete the full approximation by placing reduction forceps at the mid-body.



**4.** Plates are two-sided to facilitate placement. Bend plates as needed to ensure they lay flat on the sternum.



**6.** Insert screws into plate. Do not lock initial screw to avoid plate rotation. Fully tighten once additional screws are in place.

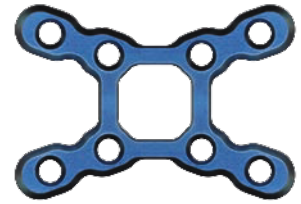
## IMPLANTS



4-Hole, L Plate, 100°  
73-2643



4-Hole, Square Plate  
73-2622



8-Hole, X Plate  
73-2623



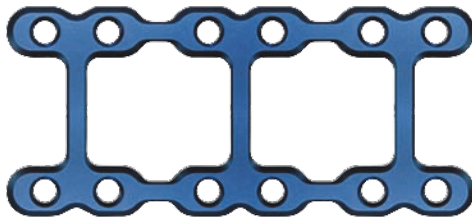
8-Hole, JL Plate  
73-2645



4-Hole, Straight Plate  
73-2636



8 Hole, Straight Plate  
73-1952



12-Hole, Wide Ladder Plate  
73-2634



12-Hole, Ladder Plate  
73-2632

## SCREWS

### Self-Drilling Locking Screws

| Part #  | Description  |
|---------|--------------|
| 73-2408 | 2.4mm x 8mm  |
| 73-2410 | 2.4mm x 10mm |
| 73-2412 | 2.4mm x 12mm |
| 73-2414 | 2.4mm x 14mm |
| 73-2416 | 2.4mm x 16mm |
| 73-2418 | 2.4mm x 18mm |
| 73-2420 | 2.4mm x 20mm |



73-54XX Five Pack

### Emergency Screws

| Part #  | Description  |
|---------|--------------|
| 73-2708 | 2.7mm x 8mm  |
| 73-2710 | 2.7mm x 10mm |
| 73-2712 | 2.7mm x 12mm |
| 73-2714 | 2.7mm x 14mm |
| 73-2716 | 2.7mm x 16mm |
| 73-2718 | 2.7mm x 18mm |
| 73-2720 | 2.7mm x 20mm |



73-57XX Five Pack

## BLADES



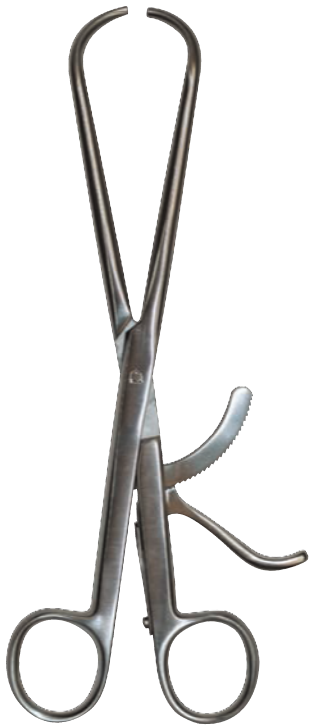
2.4mm Power Driver Blade  
73-1191



2.4mm Short Blade  
73-1194

# Primary Closure System

## INSTRUMENTATION



Bone Reduction Forceps,  
Wide  
73-2597\*



Bone Reduction Forceps,  
Narrow  
73-2596



Large Bone Reduction  
Forceps  
01-2595\*



Bone Reduction  
Forceps  
24-1112\*



Standard  
Plate Bender  
01-9728



Large  
Plate Bender  
51-6718\*



Plate and  
Wire Cutter  
51-0960



2.4mm Plate  
Holding Wand  
24-1186



Plate Holding  
Forceps  
01-9095



Screw  
Sizer  
73-0006



Power Driver□  
50-1000

---



Power Driver□ Battery  
50-1010

---



2.0/2.4mm Screw Driver Handle  
01-7600





What fascinates you about the body is also what drives us. That's why we're always pushing the boundaries of engineering to make products that help you keep the human form as glorious as it was intended. To learn more about our breadth of products, call 800-874-7711 or visit us online at [biometmicrofixation.com](http://biometmicrofixation.com).

We'd love to join you in a conversation about the future.



**One Surgeon. One Patient.®**

For more information on Sternalock™ Blu, please contact us at:

**GLOBAL HEADQUARTERS**

1520 Tradeport Drive • Jacksonville, FL 32218-2480  
Tel (904) 741-4400 • Toll-Free (800) 874-7711 • Fax (904) 741-4500 • Order Fax (904) 741-3059  
[www.biometmicrofixation.com](http://www.biometmicrofixation.com)

**EUROPE**

Toermalijnring 600 • 3316 LC Dordrecht • The Netherlands  
Tel +31 78 629 29 10 • Fax +31 78 629 29 12

As the manufacturer of this device, Biomet Microfixation does not practice medicine and does not recommend this product for use on a specific patient. The surgeon who performs any implant procedure must determine the appropriate device and surgical procedure for each individual patient. Devices shown in this brochure may not be cleared or licensed for use or sale in your individual country. Please contact your local distributor for information regarding availability of these products. Information contained in this brochure is intended for surgeon or distributor information only and is not intended for patient distribution. All surgeries carry risks. For additional information, including indications, risks and warnings please see appropriate package insert or visit our web site at [www.biometmicrofixation.com](http://www.biometmicrofixation.com) or call 1.800.874.7711

Sternalock® is a trademark of Biomet • The colors blue and gold for Sternalock® Blu are trademarks of Biomet.